

## H-4700

There are currently two versions of the H-4700 upgrade kit. The H4700 "A" will fit Riopel Mail box panels that have the locking-bar on the side. The H-4700"B" is designed to work on the CMC version. Both upgrade kits include an outside re-enforcing plate and an interior locking tab upgrade. The outside re-enforcing plate runs the entire length of the locking-bar so that it also re-enforces the hinge.

The H-4700 upgrade kits are custom made to fit all mailbox panels and must be ordered with measurements.



**H-4700a**



**H-4700b**

## H-4800

### H-4800 front loading panels



The H-4800 is designed to be installed into front loading mailbox panels. The main upgrade is installed inside the compartment designated for the postal lock with a ten gauge steel plate added to the outer panel to protect and reposition the postal lock.



**H-4800 insert**



**H-4800 insert**

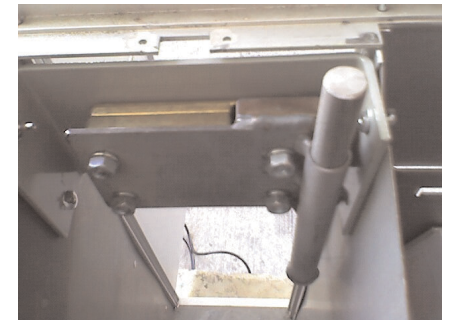
Ten gauge steel plate added to the outer panel to protect and reposition the postal lock.

## H-4900

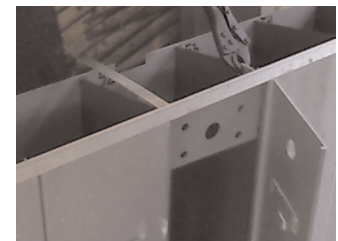
### H-4900 top loading panels



The H-4900 works on top loading Riopel, CMC and Bommer (USA) mailbox panels. The entire H-4900 is installed inside the mailbox where the postal lock is. The only thing visible from the outside is a small lever used by the letter carrier to open & close the panel. The H-4900 uses a solid steel ½ inch locking pin.



**H-4900 from the top when open, notice the 1/2 inch locking pin.**



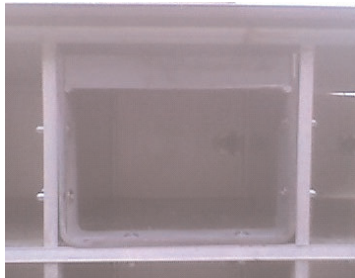
**H-4900 10 gauge steel mounting hardware.**

## H-4800r

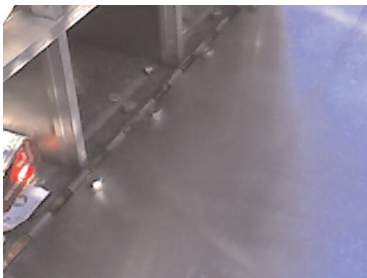
Free standing rear loading mailbox panels with two piece doors need to be fitted with new one piece doors and then fitted with an H-4800r kit. The doors are custom made to fit all rear loading mailbox panels and must be ordered with measurements.



**One piece, 3/16" aluminum door with postal lock repositioned and an H-4800r kit installed.**



**H-4800r kit, installed in a rear loading mailbox panel.**



**Heavy duty tamper proof hinge.**

## Postal Lock Key Box

Postal lock key boxes are also available from Bell Lock. All steel construction and powder coated for durability.



## Protect your Mail & Identity



**Don't let this happen to you.**

### "Bell Locksmith"

Postal lock security upgrade kits  
Theft resistant  
Durable finish  
Locksmith designed  
Approved by industry  
Professionals

Please contact:

### Laing's Lock & Key Service Ltd

8011 Larkvale Dr  
Saanichton BC V8M 1K5  
Phone 250-652-2923

Email: [laingslockandkey@shaw.ca](mailto:laingslockandkey@shaw.ca)

Manufactured By: Bell Locksmith  
11982 224th St  
Maple Ridge BC  
V2X 6B3

Phone 604-467-4957  
Fax 604-463-0203  
[www.preventmailtheft.ca](http://www.preventmailtheft.ca)